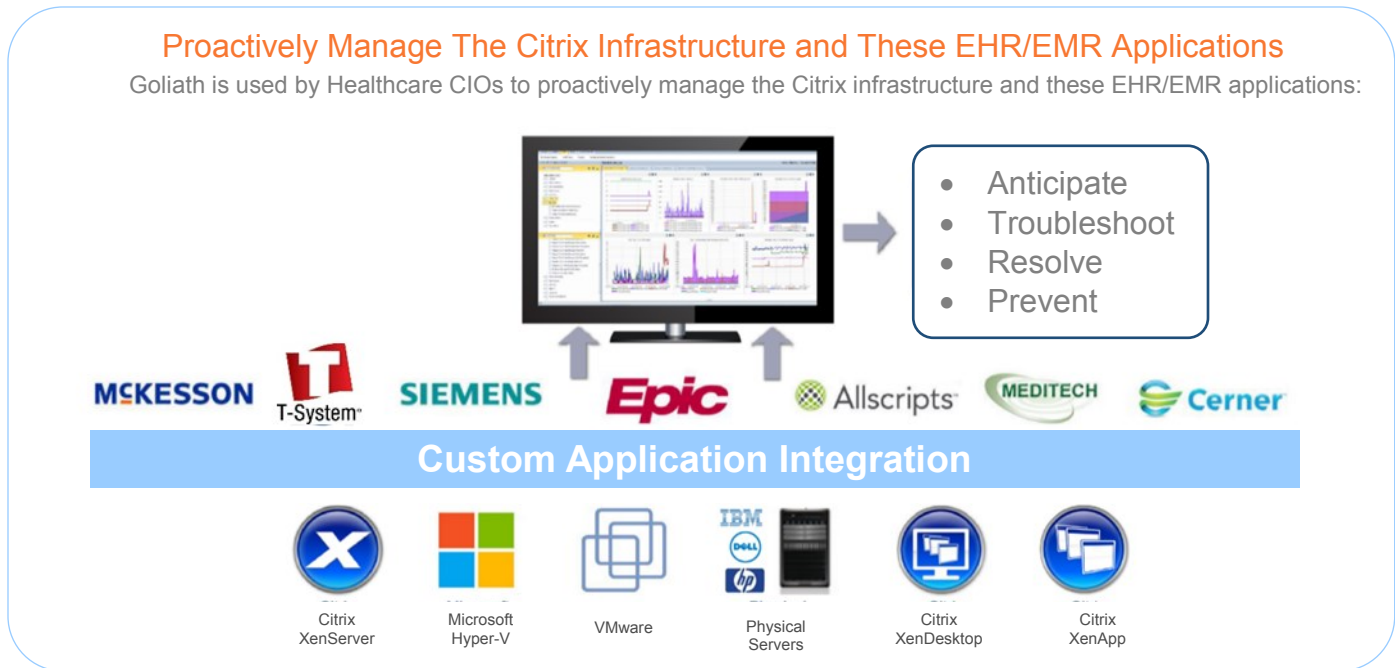


SINGLE VIEW IT PERFORMANCE MONITORING

Goliath Technology Solution enables hospitals to manage IT performance issues in their virtual server, virtual desktop, and physical IT infrastructure on premise, in the cloud or mobile. You can monitor your infrastructure, including Citrix/VMware virtualization environment, and identify issues before they occur.

The Shams Group (TSG) MSP is a cost effective 24 x 7 x 65 remote application and infrastructure support that reduces your IT support cost by 50% and enhances your service offering to users.



EHR/EMR Application Modules

Goliath's EHR/EMR Application Modules are preconfigured to monitor key role servers in the infrastructure including background job clients, data repository machines, connection machines, transaction servers, and clients. Goliath also provides the ability to ensure the uptime and remediate any service failures so end users can always execute the necessary transactions.

EHR/EMR Application Modules Include:

- Dashboards that track Key Performance Metrics for:
 - File Server I/O
 - Client and Server Performance
- End User Experience Management:
 - Logon Duration Reports with Drilldown Analysis
 - End User Connection Report
- Automated Remediation Actions for:
 - Applications
 - Citrix
 - Operation Systems
 - Virtual Machines
- Preconfigured Monitoring Rules and Alerts

Three-Tiers of Visibility in One Console

Goliath provides visibility into all the elements involved in the application delivery process and the dependencies between them.

